



Weekly Newsletter

Growing Together: Every Day In Every Way

Value of the month
Fairness

Signed Book Raffle

Back in the Autumn term, Mrs Cannon met children's illustrator Axel Scheffler at a book signing event and kindly purchased a copy of *The Gruffalo's Child* that Axel signed especially for us. As a part of our World Book Day celebrations, we are giving the children the opportunity to win this amazing prize.

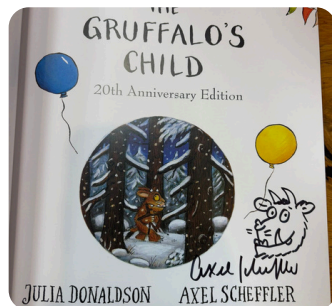


To be in with a chance:

Bring £1 into school on 21/03/2025 in a named envelope

Your child's name will be entered into the raffle and the winner will be drawn on **28/03/2025**.

If you are entitled to pupil premium funding, your child/ren will be automatically entered into the prize draw.



Thank you Mrs Cannon!

Bubble Experiments

Children in Year 1 have been developing their skills in Scientific Enquiry this week by being curious about bubbles! They thought carefully about what really puzzles them about bubbles and wrote questions they would like to find out the answers to over the next few weeks. Children then learned how to make their own bubble mixture and used straws to blow bubbles on their tables! Some bubbles were absolutely enormous and some of our budding Scientists even managed to create a bubble within a bubble! Check back to find out what children are able to discover!



Philosophy Friday

Have a go at this question at home with a grown-up!

Would it be a good thing or a bad thing...if people had 8 eyes?

Why?

DIARY DATES:

PTA Mother's Day Sale

28th March

See Details Below

PTA Easter Egg Hunt

4th April

See Details Below

Last Day of Term

4th April

Half Term

7th-21st April

First Day of Term

22nd April

For other important dates, please visit the Calendar page on our school website.

Attendance Bear

The Attendance for the week is as follows:

- 1st** Panda, Koala & Giraffe 99%
- 2nd** Jaguar & Starfish 98%
- 3rd** Penguin 94%

Well done everyone!



R.S.H.E

Within the EYFS, as part of their Personal, Social and Emotional Development, Nursery are continuing to work on turn taking, playing together, naming emotions and expressing opinions. In Reception, children have started to consider similarities in the context of how we're the same and how we're different; this has linked with our monthly value of 'fairness'.



As part of their RSHE learning this half term, Year 1 have been reminding themselves of who their trusted grown ups are. They have also been thinking about privacy in the context of their bodies, and the concepts of safe and unsafe touching. The children have shown a very mature and responsible understanding of this.



In Year 2, children have been considering how to listen to others and share their own thoughts/ideas respectfully. They are also exploring the importance of using manners and thinking about how they can use their manners in different settings.

Chopping with Year 2

Linked with our learning around India, Year 2 children have been developing their knife skills this week! They have been learning different ways they can chop food and found out how to keep themselves safe when using a knife by making a bridge over the food for their knife to go through! They also found out how to create a flat surface to lay down on their chopping board so their food didn't roll away! Every child was able to have a go at chopping cucumber, pepper and carrot (this is the hardest vegetable so the trickiest to chop!) and then enjoyed the fruits (well, veg!) of their labour by tasting them dipped in some delicious raita they had made! To further develop their skills, children will design and make their own vegetable curry over the next few weeks - watch this space!



Music Mark School

This year we are very proud to have been invited to become a Music Mark school to celebrate the value that we place on music in our school.



PROUD TO BE A
MUSIC MARK
SCHOOL
2024 - 2025

Music Mark is an organisation that advocates for excellent musical learning in and out of school; they, like us, believe that every child and young person deserves a high-quality, diverse and inclusive music education, which inspires and enriches their lives.

Music Mark schools are chosen because of their dedication to delivering a broad and balanced music curriculum. Being a member of this organisation will help us to further support us in delivering high-quality musical outcomes for all of our children.



PTA Information

Please see the important PTA information in the PTA News section below. This includes information regarding the **Mother's Day Sale**, **Easter Egg Hunt** and **School Fayre** advertising.



Park and Stride Reminder

Instead of parking on Churchfields or the roads surrounding the school, we are asking parents that drive their children to school to 'Park and Stride' from the Derby Road Car Park (behind Tesco) which is a five-minute walk from the school.

The council have agreed **FREE** parking during these times:

- Morning drop from 8.15am and 9.15am
- Afternoon collection from 3.00pm to 4.00pm



Taking advantage of the 'Park and Stride' scheme will have the following benefits:

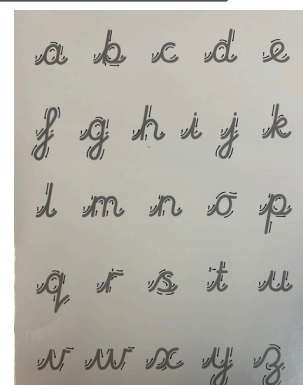
- Create a car free zone outside the school gates, making it a safer environment for children and families arriving and leaving the school
- Increase your children's daily exercise level during the final 'stride' to school
- Reduce pollution for everyone outside the school gates
- Provides the opportunity to practice essential road safety skills with your child on the short walk
- Allow parent drivers to avoid and reduce congestion along Churchfields.

Thank you for being part of the solution.

Whiteboards for Year 1

If your **Year 1** child has been to Acorn room interventions with Mrs Pert, you are able to purchase a cursive handwriting board and pen from the office for £5.

All profits will go towards new books to be used in school.



NumBots Amazing Achievement

WOW!

One of our children in Panda Class has now completed Diamond (the highest stage) on NumBots. He has also been working hard to achieve 3 stars on each level. This has demonstrated such resilience and commitment, and we are so proud of him for this fantastic achievement! Well done!



Weekly Maths Challenge

Reception

We are so pleased to see so many of our Reception children accessing NumBots to support their subitising and number fact work! Over the coming weeks, we will be working with all children to have a go on the NumBots system in school.

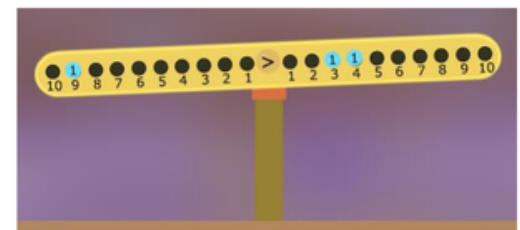


Can you have a look and explore NumBots together at home if you have not had the chance to do so already?

Years 1 and 2

This interactive number balance requires children to utilise their knowledge of number bonds in an unusual context, and offers the opportunity for them to explain and reason through their solutions.

Here is a picture of the number balance with some weights on it:



Where would you need to hang a weight to make it balance?

Can they have a go independently at finding different solutions?

<https://nrich.maths.org/problems/number-balance?tab=overview>



E-Safety Tip of the Week!



Parent Controls

Please see the below support regarding parent controls and restrictions on phones and tablets:

- iPhones and iPads

With Family Sharing, the organiser can set up parental controls and alerts to sensitive content for children in the Family Sharing group. You can use Screen Time to manage how your children use their Apple devices. You can also turn on Ask to Buy, so children must receive approval for eligible purchases and free downloads. www.support.apple.com/en-gb/105121

- Galaxy Phones and Tablets

Parental controls with Google's Family Link app allow you to set rules for how a phone and tablet are used, allowing you to guide your child while they learn and play online. You can set up Parental controls as long as they're running One UI 2.0 or a later software version.

www.samsung.com/us/support/answer/ANS00086102/

NSPCC

Phone:
0208 505 0386



Website:
www.churchfieldsinfant.com

internet
matters.org

Be Internet Legends.

E-mail:
admin@churchfieldsinfants.redbridge.sch.uk

C.I.S

PTA



• Mothers Day Sale

The PTA are hosting a Mother's Day sale.

If you would like your child to purchase a gift for their loved one, please send them into school (**Rec, Y1 and Y2 only**) on **Friday 28th March** with their money in a sealed envelope with their name, class and amount of money written on the front. Please also note if you are happy to donate your leftover change.

The gifts available will be priced between **£2 - £12**. See poster for more details.



• Easter Egg Hunt

The Easter Bunny is getting ready and is very excited to visit our Nursery and Infant children, on **4th April**, to help with their Easter Egg Hunt.

The children will hunt for 3 tokens, which they will exchange for a chocolate (or allergy-safe) egg. The event has been kindly sponsored by Le Mahzen Chocolatier- thank you!

If you would like your child to take part in the Easter Egg Hunt, please go to our online events page to buy your ticket: www.pta-events.co.uk/churchfields.



• Summer Fayre Advertising Boards

We are starting to get ready for our Summer Fayre on the **7 June**.

Stow Brothers are kindly sponsoring us again this year and we can receive £1000 for 100 advertising boards. These will only be outside your home for a couple of weeks.

This is a very easy way for us to secure £1000 for the school.

Please sign up it only takes under a minute! Thank you! Please click the link below:

<https://docs.google.com/forms/d/e/1FAIpQLSdXXetVXnPyHo9Vwoq6ZD96p7lJdx5n5r7ukUz4ngRv829LuQ/viewform?pli=1>



E-mail:

pta.churchfields@gmail.com

Website:

<https://www.facebook.com/churchfieldsschoolpta>

