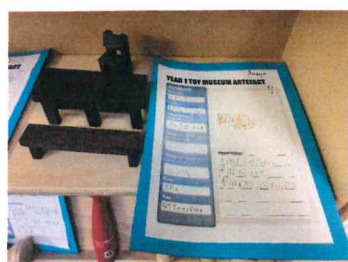


Year 1 Toy Museum

Welcome to Year 1's Toy Museum!

At the end of last term Year 1 made their own toy museum at school. They used toys that children have played with in the last 100 years, toys within living memory, and also some toys that were over 100 years old, toys beyond living memory. Have a look at some of the artefacts in their museum.



Philosophy Friday

Have a go at this question home with a grown up!

Would you rather choose spiders as big giants or giants as small as spiders?

Why?

DIARY DATES:

Year 2 Workshop
17th January

Nursery Workshop
18th January

Nursery Stay & Play
30th January

Reception Workshop
31st January

Year 1 Workshop
1st February

Parent Consultations
8th February 3:40 - 6 pm

Parent Consultations
12th February 3:40 - 7 pm

World Book Day
7th March

PTA Easter Egg Hunt
28th March

For other important dates please visit the Calendar page on our school website

Curriculum Workshops

We believe that children achieve their very best when we work in partnership with our families. This term we will be resuming our popular parent workshops that provide a valuable opportunity for you to understand how you can support your child at home with their learning.

Workshops will be virtual and will begin at **5pm**. The links with details will be sent out to Year 2 and Nursery shortly. Year 1 and Reception links to follow at a later date.

Year 2 - 17th January

Nursery - 18th January

Reception - 31st January

Year 1 - 1st February

Mobile Phones

We would like to remind you not to use mobile phones on the school premises when dropping off or collecting children. There are many reasons for this: firstly, we have a duty to safeguard our children, and the use of mobile devices when children are present, both in our playgrounds and on our school site, is not permitted. Also, we believe that it is really important to talk to your child about their day and their achievements when they are collected from school and as our sign says:



‘Greet your child with a smile, not a mobile!’.

Returning To Routine

We know coming back to school is difficult after a long break especially when the mornings may be dark and cold but please ensure that your child is on time for school so they can settle back into the routine as quickly as possible.

It is unsettling for children to arrive after their friends and they can feel embarrassed entering the classroom when everyone is already seated. Being late also means they may miss the first few minutes of the teaching session, which impacts on their learning.

We know a number of parents are still arriving late and walking their child to the classroom. This means our staff need to monitor the door rather than attend to the children that have arrived on time, which again delays learning. Please ensure your child is in line by 8:55 so they can enter school with their friends.

Lateness also puts additional pressure our office team who are trying to deal with queries both in person and on the telephone. We need to reduce the number of children who through the office once the gates are closed.

Finally, Mrs Anderson and Mrs Beck have a responsibility to secure the site and lock gates at 9:00 to keep everyone in school safe. This is delayed when children arrive late to school as we wait for parents to leave the premises. Please be reminded that the gates open at **8:45 am** and children should be in the playground, lining up with their friends by **8:55 am** when the bell is rung. The gates are locked at **9:00 am** to allow enough time for parents to leave, rather than to enable late children to enter.

We thank you for your understanding and cooperation on this matter. We look forward to seeing you at school by 8:55 on Monday morning. Have a wonderful weekend.

School Admissions 2024

DEADLINE

If your child is starting Reception, transferring from infant to junior school, or transferring from primary to secondary school in September 2024, you must apply online at www.redbridge.gov.uk/schools/schooladmissions/. Application rounds are now open and must be **submitted by 15th January 2024**.

The deadline for parents and carers to apply for primary school places for children born between 01/09/2019 and 31/08/2020 is on **15th January 2024**. Please note that where parents are intending to request deferred entry for their summer-born children, they still need to apply by this deadline.

Further information on applying for primary school, as well as the link to the e-Admissions portal, can be found at <https://www.redbridge.gov.uk/schools/primary-school-admissions/>.

Nursery Stay & Play

Spend some time playing with your child in Nursery! Nursery are hosting a Stay and Play on **Tuesday 30th January**.

Morning session 8:45 – 10:00 am

Afternoon session 1:00 – 2:00 pm
(from 12:45 pm for parents of afternoon children)

Please remember not to use mobile phones while on-site. Younger children are welcome but must be kept with you.



E-Safety Tip of the Week!

Age Ratings

There is so much that we can do online nowadays including playing games, chatting with others, watching TV or sharing our videos/photographs. One of the ways we can help keep our children safe online is by checking age restrictions/ratings as detailed below:

- Films: The British Board of Film Classification (BBFC) rate films. This page includes a link to a 'Parents' Guide to Age Ratings': www.cbbfc.co.uk/resources/viewing-films-safely-online
- Video games: PEGI provides age classifications for video games. PEGI considers the age suitability of a game, not the level of difficulty. It is important to note that PEGI do not take into consideration the chat facilities within games
- Apps: Check the individual age ratings within the relevant app store. We also recommend that you download any apps and use them yourself to check their suitability
- Social Media networks: All social media networks have a minimum age rating; they are all at least 13+.



NSPCC

internet
matters.org

Be Internet Legends.

