



Churchfields Infants School

Weekly Newsletter

Autumn Term, Issue 2
15th September 2023

Value of the
month
Kindness

Growing Together: Every Day In Every Way

Receptions First Lunch

The Nursery and Reception children are settling brilliantly and working very hard. The Reception children have started phonics this week and are enjoying learning.

Reception children also enjoyed their first lunch. They all queued beautifully and it went seamlessly.



Philosophy Friday

Have a go at this question at home with a grown up!

**Would you rather
only eat peas or
Brussels sprouts with
every meal?**

Why?

DIARY DATES:

Curriculum Workshops

Reception - 27th September

Year 1 - 28th September

Year 2 - 4th October

Nursery - 5th October

Parent Consultations

W/C 16th October

To be confirmed

Flu Vaccinations

20th October

Half Term

23rd - 27th October

INSET Day

30th October

Individual Photos

8th November

Attendance Bear

The winners for the week beginning 4th September are:

1st Panda 98%

2nd Jaguar 97% 3rd Koala 95%

Well done everyone!



Uniform

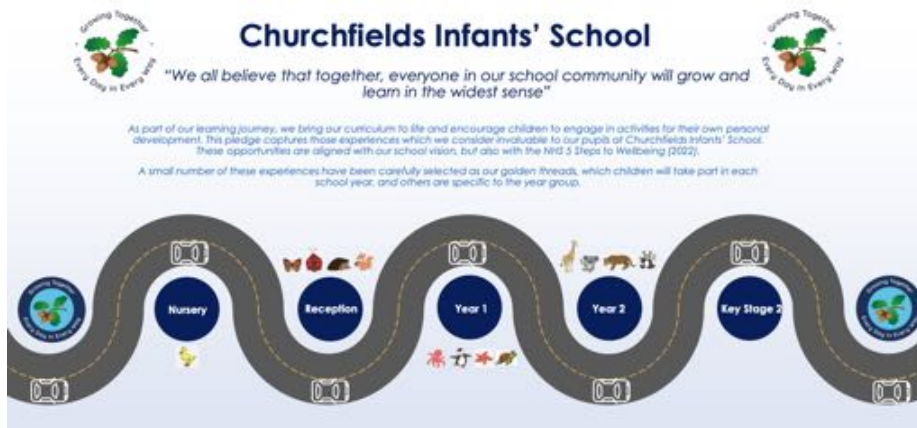
Please make sure all your child's articles of uniform are named clearly. This includes your child's shoes, coats, hats, PE kits and water bottles. Naming your child's property will make it easier to identify who it belongs to so it can be returned.

For other important dates,
please visit the Calendar
page on our school website.

Churchfields Pledge

This week you received a letter with exciting information about our Churchfields Pledge, which has been launched this school year.

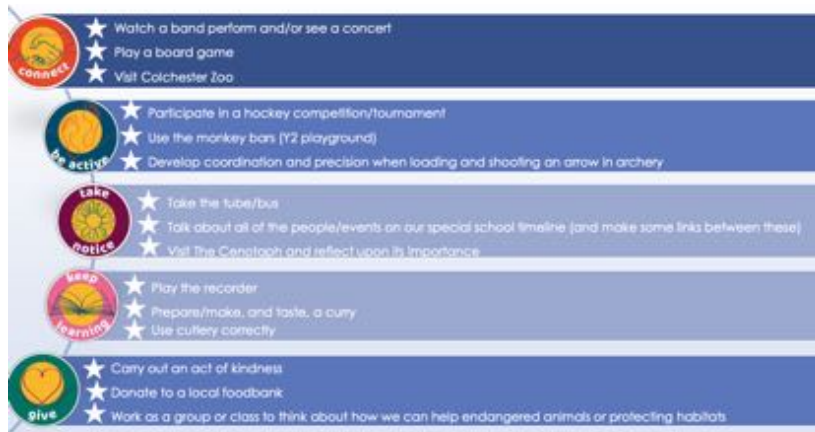
Please do give the letter a read when you are able to and have a look at the wonderful enrichment and wellbeing offer for our children so that you can practise skills together.



Nursery



Year 2



Marvellous Me

All of our classes are set up for the new school year, and our Reception children have now received their parent join codes / letters.

Please do look out for amazing learning updates (don't forget to 'Hi5' us!) and do let your child's class teacher know if you haven't been able to connect so that we can support with this.



Ode To Our Lending Library

As you know, at Churchfields we love reading and getting lost in a good book,
Have you seen our lending library? Please come and take a look.

What could be better than discovering a new plot?
How exciting this is! We hope you want to read the lot!

We would love for you to borrow one or two books at a time,
Please make a quick decision so others don't have to wait in line.

Do you like non fiction? Or are stories more up your street?
We have so many to choose from, so many books for you to complete!

Did you know we also have books for adults to explore?
We just hope you love reading as much as us and don't see it as a chore!

Once you've enjoyed the story be sure to return it,
Find somewhere upon the shelves for it to sit.

We ask for donations of books that are nearly new,
If we all club together I'm sure we can get more than a few.

Do share your recommendations,
What was your favourite book?

What an exciting opportunity for us all,
Now come inside and take a look!



Curriculum Workshops

We believe that children achieve their very best when we work in partnership with our families. We would like to invite you to our popular workshops which provide a valuable opportunity for you to understand how you can support your child at home with their learning.

Last year we held this virtually in the autumn term and in school in the spring term. Listening to your feedback and looking at the attendance figures from last year, we have decided to hold these meetings virtually so as many of you can attend as possible. Dates are as follows:

Year 2 – 4th October.

Year 1 – 28th September.

Reception – 27th September.

Nursery – 5th October.

Workshops will begin at 5pm and we will send joining details nearer the time.

Our Outdoor Learning Area

September is here once again and we are lucky to have the wonderful weather to return to. We are entering into the second phase of planning our Outdoor Area, with a vision to create a biodiversity environment for our children to be part of and enjoy. We wish to support wildlife and habitats by introducing mini ponds, bug hotels and small wildflower areas. We shall receive a delivery of shrubs and trees from the Wildlife Trust in November which will need planting. After a dark winter, we all think of spring, so now is the time for us to start planting bulbs as autumn slowly arrives.

We have kindly received a small donation from Waitrose to help with purchasing plants but we are in need of any building material such as logs, palettes, stone and pebbles to help create these spaces. We would very much appreciate any donations from works you may have had done and materials that are no longer needed. Please ask family and friends.

As always, we thank you for your continued support. Please look out for dates when the planting will begin with more information to follow.



E-Safety Tip of the Week!

Age Ratings

There is so much that we can do online nowadays including playing games, chatting with others, watching TV or sharing our videos/photographs. One of the ways we can help keep our children safe online is by checking age restrictions/ratings as detailed below:

- Films: The British Board of Film Classification (BBFC) rate films. This page includes a link to a 'Parents' Guide to Age Ratings': www.cbbfc.co.uk/resources/viewing-films-safely-online
- Video games: PEGI provides age classifications for video games. PEGI considers the age suitability of a game, not the level of difficulty. It is important to note that PEGI do not take into consideration the chat facilities within games
- Apps: Check the individual age ratings within the relevant app store. We also recommend that you download any apps and use them yourself to check their suitability
- Social Media networks: All social media networks have a minimum age rating; they are all at least 13+.



NSPCC

internet
matters.org

Be Internet Legends.



Phone: 0208 505 0386

Website: www.churchfieldsinfant.com

E-mail: admin.churchfields-inf@redbridge.gov.uk