



Churchfields Infants' School

Newsletter

twitter

@churchfieldsinf

www.churchfieldsinfant.com

Spring Term Issue 21

7 May 2021



Eid al-Fitr

We know many families will be celebrating the end of fasting in Ramadan and wish you all Eid Mubarak.

Park & Stride



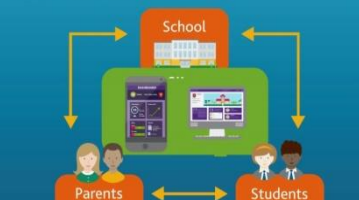
Parking

Thank you to all those parents who have been walking to school or using the Derby Road Car Park to 'walk and stride'.

It has made a huge difference, causing less pollution and congestion on the roads, and making it much safer for our children entering and leaving school. However, some parents are still driving and parking dangerously on the driveway kerbs and using the disabled bay. Please show consideration for the people who really need this bay and do not make 3 point turns on the road or in the drive – car bumpers are the same height as many of our nursery pupils!

SIMS Parent App Lite

SIMS Parent
Engage with your child



An activation email was sent to Reception, Year 1 and Year 2 parents/carers on 6 May. Simply click on the link from your tablet, PC or smartphone to activate your account.

You can then login using your normal **Facebook**, **Twitter**, **Google** or **Microsoft** username and password.

From your smartphone or tablet, download the app from the Google Play or Apple App store – search for **SIMS Parent**. From a PC or Windows phone, login online at www.sims-parent.co.uk

Warm Waterproof Clothing

Please send your child in to school with a waterproof coat or jacket while the weather is still so changeable. It does always seem to be raining at break and pick-up times!



If your child has:
a high temperature
a new, continuous cough, or
a loss of, or change in, sense of smell or taste

This could be a sign of coronavirus

Book a test

If your child has:
a runny nose, is sneezing or feeling unwell
But they don't have:
a high temperature
a new, continuous cough, or
a loss of, or change in, sense of smell or taste

These are not normally symptoms of coronavirus

Seek advice from a pharmacy, dial 111 or see your GP

Philosophy Friday

Have a go at this question at home with a grown up!

Should we have snowmen in summer?

Why?



Diary Dates

Half-Term

Mon 31 May
to
Fri 4 June

INSET Days

Monday 7 June
Friday 2 July

For other important dates, please visit the Calendar page on our school website.